



WESSA

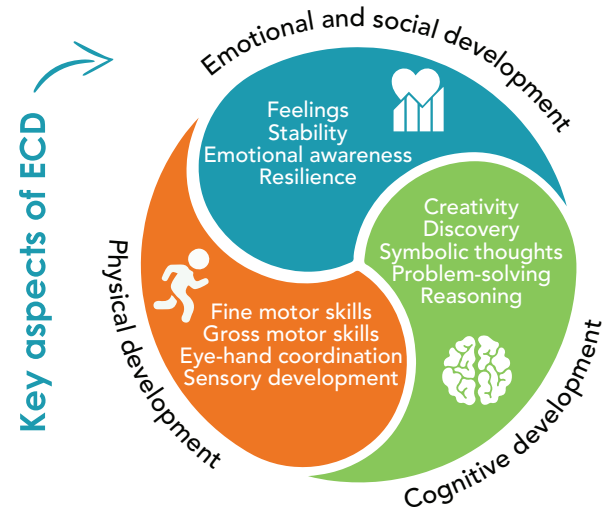
HEAD START
PROGRAMME

SUPPORTING EARLY CHILDHOOD DEVELOPMENT (ECD)

The WESSA Head Start Programme is a workshop series that facilitates the emotional, social, cognitive and physical development of South African children. Investing in early childhood development is an investment in their future well-being and productivity.

The programme supports caregivers and Early Childhood Development (ECD) practitioners by enhancing their practical skills to create a range of educational toys and games. Caregivers are encouraged to share this information (each- one, teach- one approach).

Non-toxic, readily available household materials are used to make unique, age-appropriate toys while incorporating environmental themes. Through this sustainable approach the programme promotes and encourages upcycling and environmental awareness from a young age.



SUSTAINABLE APPROACH

Sustainability and environmental awareness are promoted through:

- Using environment-themed toys and games to promote indigenous knowledge about the environment
- Teaching children how to minimize waste, recycle, upcycle and reuse
- Reducing pollution by making educational toys and games using recyclable materials

INVESTING IN ECD IS KEY TO SOUTH AFRICA'S FUTURE

High-quality education early in a child's life gives them the head start they need for **continued success later at school and at work**. It also contributes to **emotionally and socially well-rounded children**.

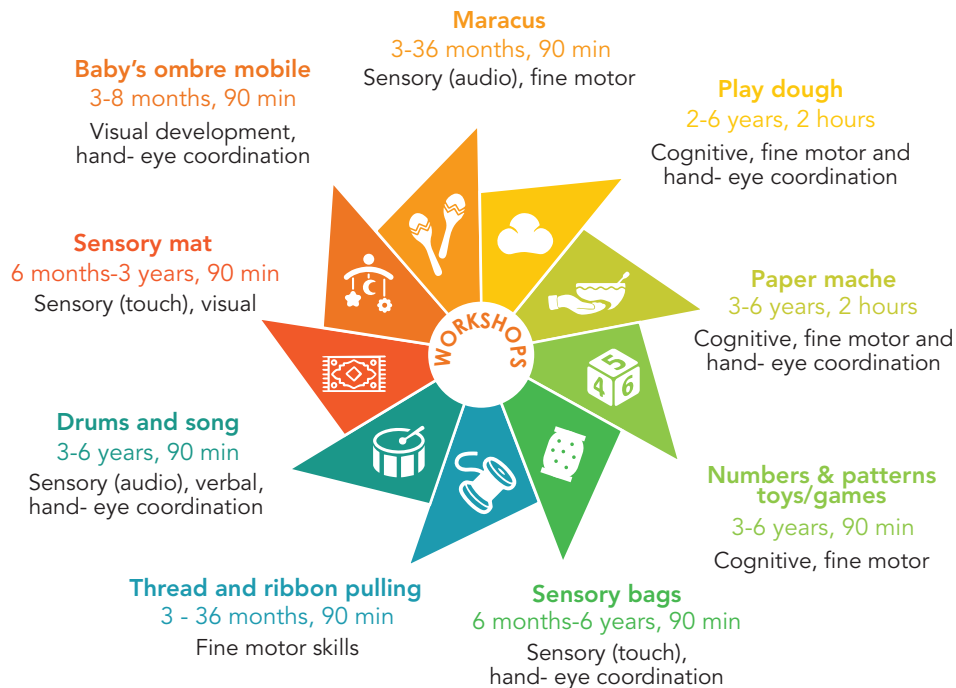
There are approximately 8.2 million children aged 0-6 years in South Africa and almost two thirds of these children live in 40% of South Africa's poorest households. **Access to quality ECD programmes and resources is less likely for a child from a low-income household**. Studies show that once children fall behind on their learning, they are likely to remain behind. **Spending resources toward education earlier in life is a far better investment than paying later in the hopes of helping a struggling child to catch up.**

If we are to
break the cycle of
poverty, we need to
educate the children
of the poor.
President Cyril
Ramaphosa
SONA 2018



AVAILABLE WORKSHOPS

We offer a range of educational toy and game making workshops with the option to combine several for a full day course, or separately as short, stand-alone workshops. The **workshops are delivered on your premises** (ECD centre, creche or community centre) by a skilled, professional WESSA Head Start facilitator, and can be delivered in English, Zulu, Setswana or Sepedi.



WESSA

#PeopleCaringForTheEarth

CONTACT US

to find out more about WESSA Head Start or to sign up for a workshop.

Lutfiyah Suliman
Project Manager

Tel 011 462 5663 | Cell 066 073 9104
Email Lutfiyah.Suliman@wessa.co.za

Precious Mogoba
Project Coordinator & Workshop
Facilitator

Tel 011 462 5663
Email Precious.Mogoba@wessa.co.za



www.wessa.org.za

