



INTERNATIONAL SCHOOL PROGRAMMES



EDUCATION FOR SUSTAINABLE DEVELOPMENT AND TRANSFORMATION

WESSA International School Programmes consist of three products that encapsulate **education for sustainable development** and transformation of society, promoting innovation in learner- centered development.

By combining the three programmes, schools ensure a **complete developmental approach**, providing learners with an opportunity to develop different elements during all phases of school, as well as enhancing 21st century competencies and skills necessary for the 4th industrial revolution.



Eco-Schools

- Environmental learning
- Social and environmental sustainability
- Teacher training at local level
- Research and project-based learning
- Instil a sense of responsibility and cultivate a sustainable mindset

LEAF (Learning About Forests)

- Taking ownership of creating healthy surroundings
- Engaging with local biomes and planting indigenous trees
- Project-based learning and systems thinking
- Understanding the relationship between people and nature, and the cultural, ecological, economic and social functions and benefits

YRE (Young Reporters for the Environment)

- Engage with local social and environmental issues and risks
- Suggest well-researched solutions
- Include local communities and stakeholders
- Reimagine and craft a social and environmentally just future
- Encourage self-directed learning



Inclusive education →



Promote SDGs →



Developing 21st century leaders

ECO-SCHOOLS

This whole school development programme helps to **mobilise future-oriented action** through an eco-committee, audit and implementation plan. The annual awards system motivates early childhood development centres, primary and high schools to engage creatively in activities like **food production, recycling, biodiversity stewardship, wise water- and energy- use** and much more.

Implemented
in SA
since 2003
by WESSA



LEAF (Learning About Forests)

LEAF includes indigenous knowledge systems based on experiential learning of past generations, to bring an awareness and appreciation of a holistic African worldview of South African biomes. Through LEAF the shared tenets of modern science and indigenous knowledge contribute to **maintaining the integrity of natural ecosystems**. Indigenous knowledge **unlocks entrepreneurial opportunities** such as woodworking, weaving, use of edible and medicinal plants and farming. Learning expeditions allow for rigorous, **practical learning** through a STEAM approach.

Unlock
learner
potential
through
participation



YRE (Young Reporters for the Environment)

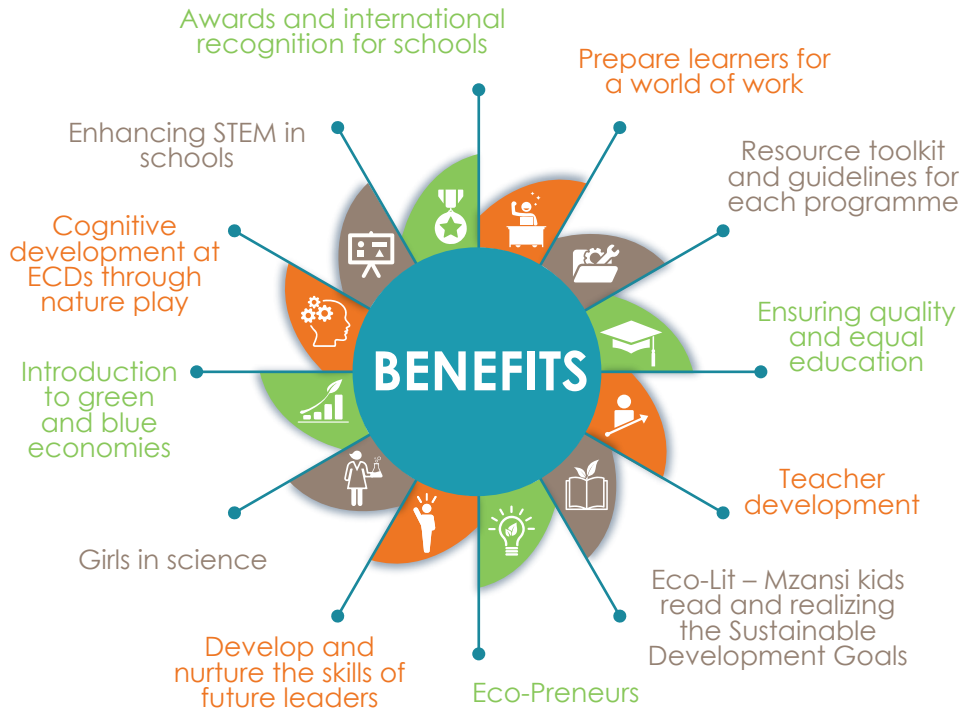
YRE **develops young African leaders** to pursue a vision of **human rights, inclusivity and environmental and social justice**. In recent years South African youth have become vociferous socio-economic champions and YRE allows for the inclusion of an **ecosystem lens** which is essential for long-term strategy. YRE operates on a strong social media and global network allowing for solution-driven, knowledge rich and contextual discourse. Young reporters are mentored by experts in the field to determine bold, smart and sensitive **solutions to local environmental issues**. This focus on making a positive difference uniquely positions high school learners to hone research and leadership skills and explore careers.

Solutions to
local
environmental
issues



IMPLEMENTATION AND BENEFITS

The WESSA International School Programmes takes learners on a journey of adventure, discovery, self-actualisation and learning real-life developmental skills for the workplace. A combined school from Grade R to 12 would do well to include all three programmes. Early Childhood Development Centres, Primary Schools and High schools can implement a combination of the programmes, depending on their focus and setting.



WESSA

#PeopleCaringForTheEarth

CONTACT US

to partner with us in bringing about transformation in schools, and investing in the development of our youth for a more sustainable future.

Cindy-Lee Cloete
School Programmes Manager

Tel 011 462 5663

Cell 064 752 0598

Email Cindy.Cloete@wessa.co.za

www.wessa.org.za

